



Town & Country

Front Street, Slip End

In Excess of £450,000



87 Front Street

Slip End

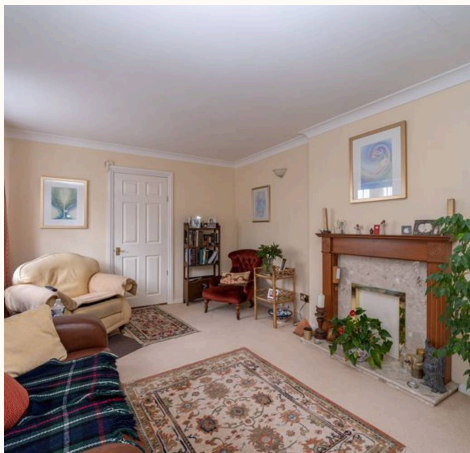
- Large Village Cottage
- Entrance Hall
- 19Ft Lounge
- Dining Room
- Kitchen / Breakfast Room
- Four Bedrooms
- First Floor Bathroom
- Large Rear Garden
- Gas Central Heating
- Double Glazed

Slip End offers a rural setting with easy access to urban amenities. It's close to the M1 motorway junctions 9 and 10, Luton Airport, with Luton Railway Station providing connections to London. Local buses also serve the area.

Council Tax band: D

Tenure: Freehold

EPC Energy Efficiency Rating: E



87 Front Street

Slip End

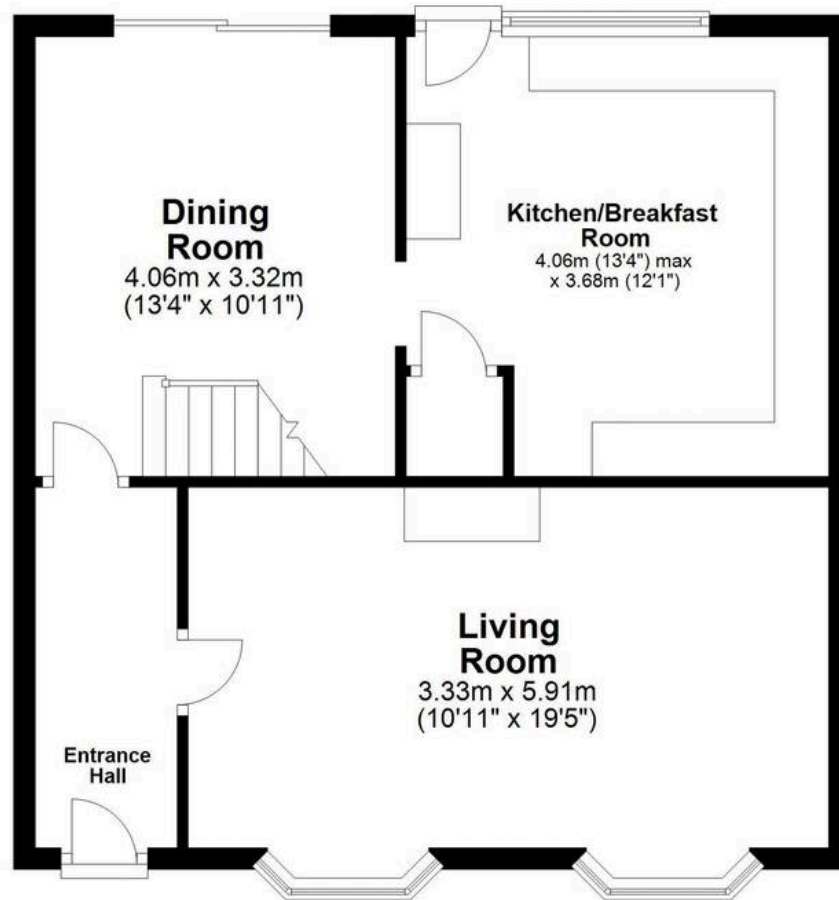
Nestled in the heart of Slip End, this charming 4-bedroom mid-terraced house offers the perfect blend of traditional features and contemporary comforts. Stepping into the property, you are greeted by a welcoming entrance hall leading to a generous 19ft lounge, providing ample space for relaxation and entertaining. The dining room exudes character with its exposed beams, while the kitchen/breakfast room boasts modern fixtures and fittings, creating a harmonious balance between old and new. The first floor is home to four well-proportioned bedrooms, offering comfortable accommodation for families or those seeking additional space for guests. Completing the interior, a first-floor bathroom provides convenience and functionality. This village cottage benefits from gas central heating and double glazing throughout, ensuring a warm and energy-efficient living environment all year round.

The garden presents an opportunity for outdoor leisure and al-fresco dining, ideal for enjoying the fresh air and embracing the natural surroundings. Whether it be gardening, hosting summer parties, or simply unwinding after a busy day, this expansive outdoor space offers endless possibilities for creating cherished memories with loved ones. Close to M1 junction 10, Luton Airport and local schools this property is a must see!



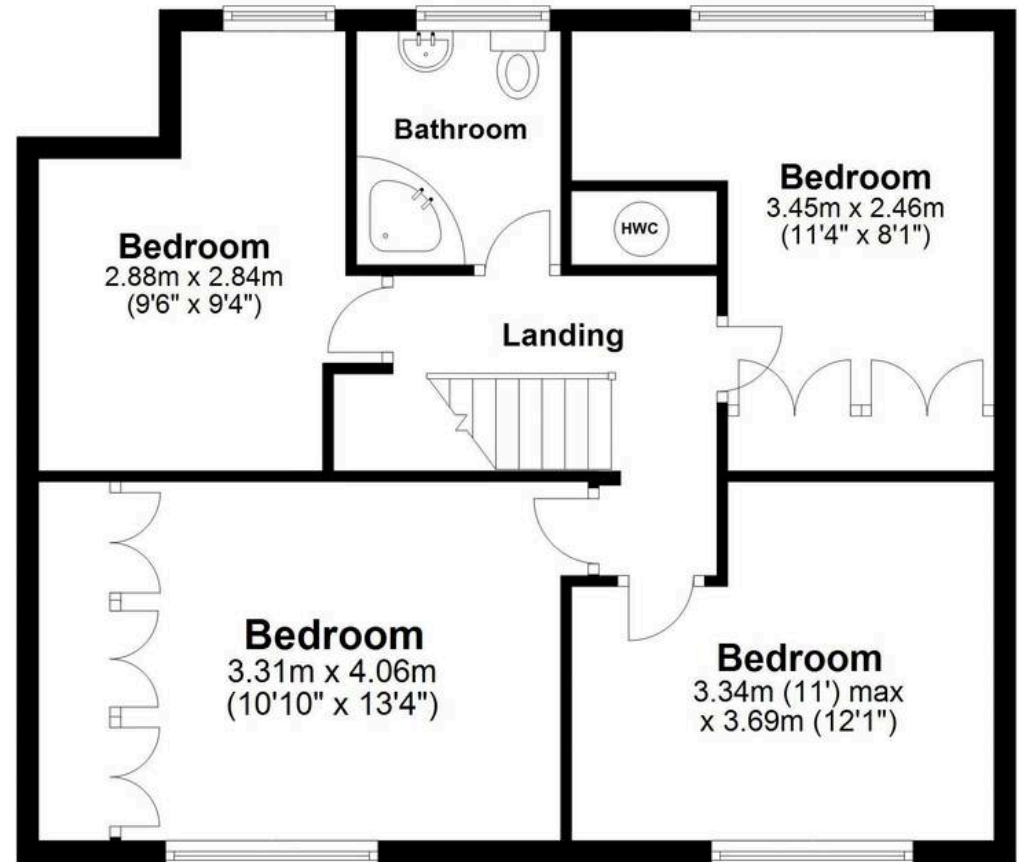
Ground Floor

Approx. 54.2 sq. metres (583.3 sq. feet)



First Floor

Approx. 63.8 sq. metres (686.5 sq. feet)



Total area: approx. 118.0 sq. metres (1269.9 sq. feet)

Disclaimer - Floor plan is for marketing purposes only and is to be used as a guide - SKM Studio
Plan produced using PlanUp.